



A.L.i.C.E.

2014

What is an Active Intruder Emergency?

- An Active Intruder Emergency involves:
 - an intruder using a weapon; and
 - engaging in random or systematic violence



An Active Intruder Emergency may:

- last for minutes or hours
 - (average time less than 10 minutes)
- range over a large and constantly changing area
- threaten everyone within close proximity of the intruder



How do you respond to an Active Intruder?

- Traditionally, you would shelter in a certain place and wait for police to arrive
- With an Active Intruder; this may cause more casualties
- We choose to follow the “ALiCE” response plan in response to an Active Intruder

What is “ALiCE”?

- ALiCE is an acronym for 5 strategies you can utilize in order to increase your chances of surviving a surprise attack by an Active Intruder
 1. Alert
 2. Lockdown
 3. inform
 4. Counter
 5. Evacuate

ALERT

- Can be anything that alerts you to a possible Active Intruder. It may be:
 - Gunfire
 - Witnesses
 - An Intercom Announcement
 - A Phone alert

A
L
I
C
E

LOCKDOWN

- This is a semi-secure starting point from which to make decisions. If you decide to not evacuate, secure the room and:
 - Lock the door
 - Barricade the door with anything available (desk, chairs, etc.)
 - Look for alternate escape routes (windows, other doors)
 - Silence or place cell phones on vibrate

A
L
I
C
E

LOCKDOWN (Continued)

- Once secured, do not open the door for anyone. Police will enter the room when the situation is over.
- Gather items (shoes, chairs, books, pens, etc.) and mentally prepare to defend yourself or others.
- Put yourself in position to surprise the active intruder should they enter the room.

iNFORM

- As real-time information is received it will be provided by all means possible
- Use this information to make a single or collective decision about the best survival option
- Be flexible. The situation may quickly change

A

L

i

C

E

COUNTER

- This is used as a last resort if you are unable to evacuate (get out!) or your lockdown (hide out!) has been breached
- This is the use of simple, proactive techniques should you be confronted by the Active Intruder
- Anything can be a weapon
- Throw things at the intruder's head to disrupt their aim
- Create as much disruption as possible

A
L
I
C
E

COUNTER (Continued)

- Attack in a group (swarm)
- Grab the Intruders limbs and head and take them to the ground and hold them there
- If you have control of the intruder, call 911 and tell the police where you are and listen to their commands when officers arrive on scene
- If you have control of the weapon, place it in a trash can and remain in possession of the trash can. This will eliminate confusion when law enforcement arrives.

EVACUATE

- Remove yourself from the danger zone as quickly as possible
- Decide if you can safely evacuate
- Do not stop running until you feel you are a safe distance from the area
- Call your parents as soon as you are away from danger to inform them you are OK

A
L
I
C
E

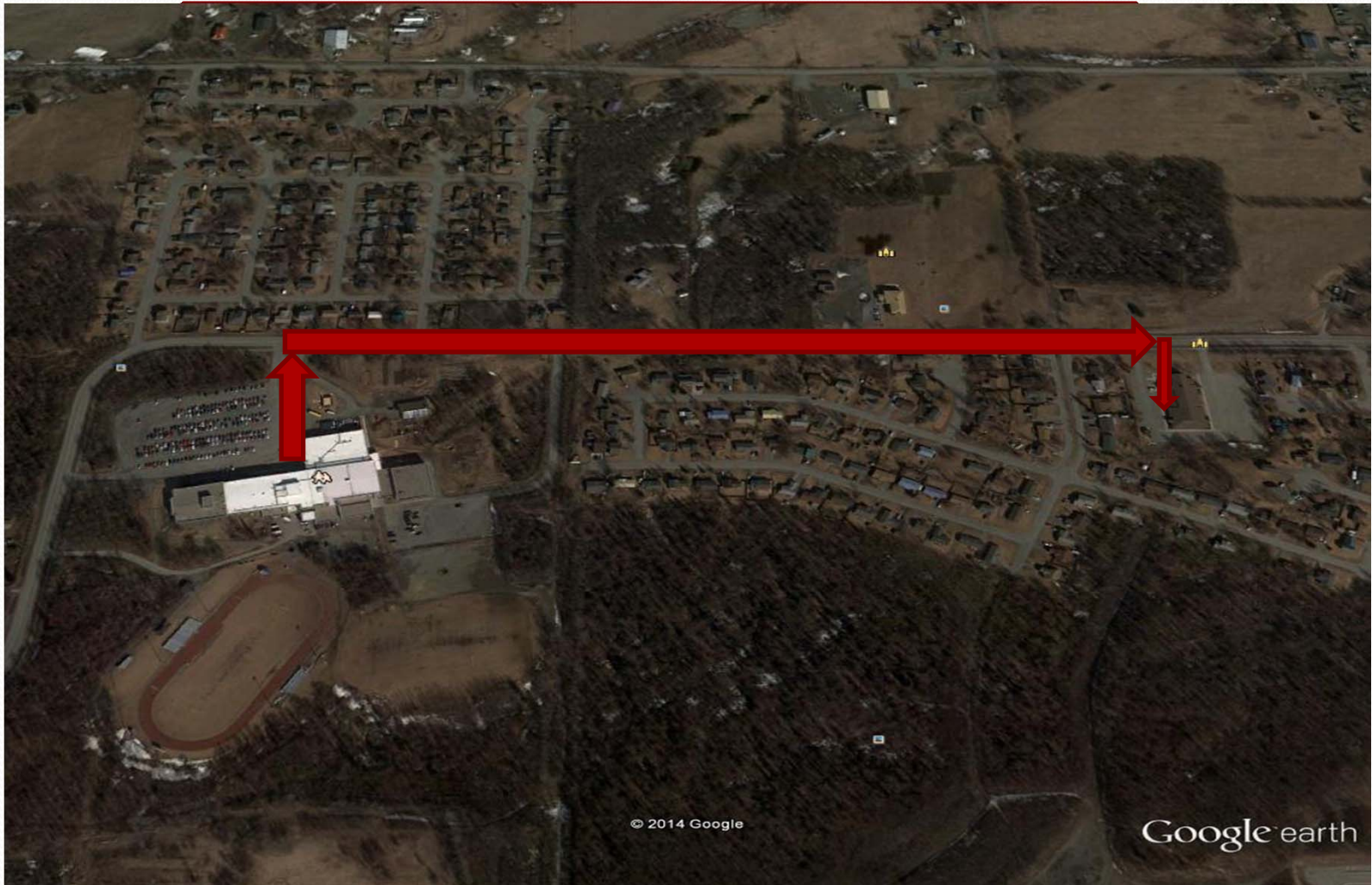
EVACUATE (Continued)

- Consider a window as an exit
- Break out windows, if they do not have openers, and attempt to quickly clear glass from the frame
- Consider using belts, clothing or other items as an improvised rope to shorten the distance you would fall
- Hang by your hands from the window ledge to shorten your drop
- Attempt to drop into shrubs, mulch or grass to lessen the chance of injury

Where do I go once I Evacuate?

- Anywhere outside of the building and far away from the school that you feel is safe
- Escaping by foot is best. Parking lots will bottleneck as first responders need access. Cars are slower and more dangerous than evacuating to a safe distance on foot.
- The most important thing in an violent intruder situation is your safety. You will need to be able to make quick and decisive decisions to ensure the safety of yourself and others.
- The Mormon church on Arctic is our official rendezvous point.

Where is that?





Get Out!

(Evacuate)

Hide Out!

(Lockdown)

Take Out!

(Counter)




Important!

- Work collectively with teachers and peers in an organized effort to yield a higher rate of survival.
- If you by yourself, you will have to determine your own course of action.

Remember!

- You will be making a decision based on the information you have to get out, hide out, or take out:
- **A**- Alert
- **L**- Lockdown
- **i**- Inform
- **C**- Counter
- **E**- Evacuate



“In a moment of decision, the best thing you can do is the right thing. The next best thing is the wrong thing. **The worst thing you can do is nothing.**”

-Theodore Roosevelt



Questions?